

HD Multi SeaCam®

Full HD, Multi-Purpose, Versatile Workhorse Camera.



FEATURES

Rugged Design Evolved from the Multi SeaCam®

Full HD 1080p/30 Video Output

Titanium Housing & Scratch-Resistant Sapphire Flat Port

6000m Depth Rated¹

T: (858) 576-1261
F: (858) 576-0219

4033 Ruffin Road
San Diego, CA
92123- 1817 USA

www.deepsea.com
sales@deepsea.com



HD Multi SeaCam®

Connector Options*

Mechanical Specifications

Configuration	Flat Port	Dome Port
Housing	Aluminum Titanium	
Port	Sapphire	Optically polished glass hemisphere
Outer Diameter	56 mm [2.20 in]	69 mm [2.72 in]
Overall Length (w/o connector)	103 mm [4.05 in]	121 mm [4.77 in]
Weight in Air	Titanium: 0.65 kg [1.4 lbs]	Titanium: 0.65 kg [1.4 lbs]
Weight in Water	Titanium: 0.44 kg [1.0 lbs]	Titanium: 0.37 kg [0.84 lbs]

Environmental Specifications

Depth Rating ¹	Aluminum: 4,000 m [13,123 ft] Titanium: 6,000 m [19,685 ft]	
Operating Temp. (Air and Water)	-30° C to 40° C [-22° F to 104° F]	

Optical Specifications

Lens	2.5 mm, F/2.8 Low Distortion	2.0 mm, F/3.0 Low Distortion
Focus	Fixed focus	
Depth of Field	50 mm [2 in] to Infinity	10 mm [0.4 in] to Infinity
FOV in Air	130° H x 70° V x 150° D	145° H x 85° V x 165° D
FOV in Water	85° H x 50° V x 95° D	145° H x 85° V x 165° D

Video Specifications

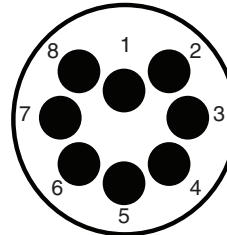
Image Sensor	1/3-in. 2.2MP CMOS, 16:9 @ 0.1 Lux
Scene Illumination	0.2 Lux [50 IRE] 3.0 Lux (Color)
Resolution	1920 H x 1080 V
Signal to Noise	>50 dB
HD Video Output ²	HD-SDI 1.5 Gb/s, 1080p/30
Analog Video Output ³	CVBS, NTSC/PAL Selectable

Electrical Specifications

Power	10-32 VDC, 2W-max
Current	200mA max

Flexlink™

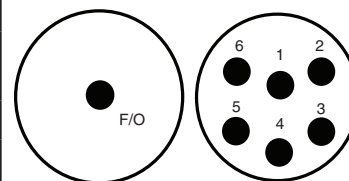
SEACON MCBH8



Pin 1 – DC +
Pin 2 – DC -
Pin 3 – CVBS - RET
Pin 4 – CVBS
Pin 5 – SDI +
Pin 6 – SDI -
Pin 7 - Control (A)
Pin 8 - Control (B)

Fiber

SEACON MINF-1FO + SEACON MCBH6



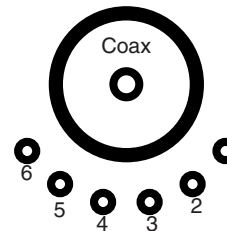
1FO – HD-SDI video

Pin 1 – Ground
Pin 2 – Power
Pin 3 – Analog Video (CVBS)
Pin 4 – CVBS_RET
Pin 5 – Control (A)
Pin 6 – Control (B)

Coax

SubConn 75CXBH Coax Hybrid

Glass to Metal Version



COAX – HD-SDI video
Pin 1 – Ground
Pin 2 – Power
Pin 3 – Analog Video (CVBS)
Pin 4 – CVBS_RET
Pin 5 – Control (A)
Pin 6 – Control (B)

*Other connectors available upon request.

*Pinout diagrams represent the orientation of the pins on the male bulkhead.

¹ Limited by connector, housing crush depth exceeds 10,000 m.

² Configurable to 1080p/25, 720p/60, 720p/50. Field of View may be reduced.

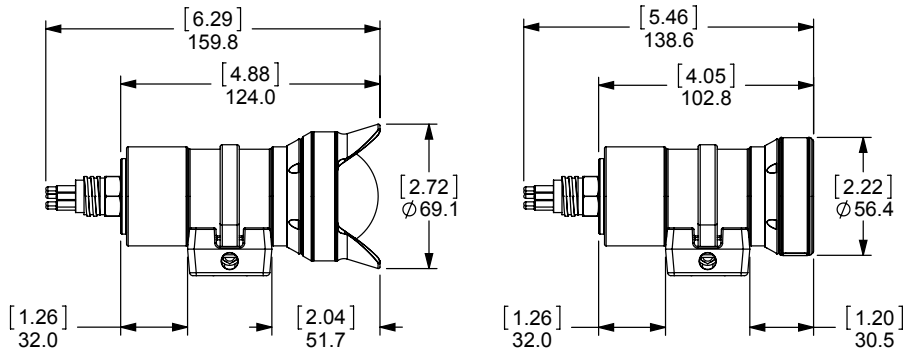
³ Format contains 16:9 image stretched to 4:3.

T: (858) 576-1261
F: (858) 576-0219
www.deepsea.com
sales@deepsea.com

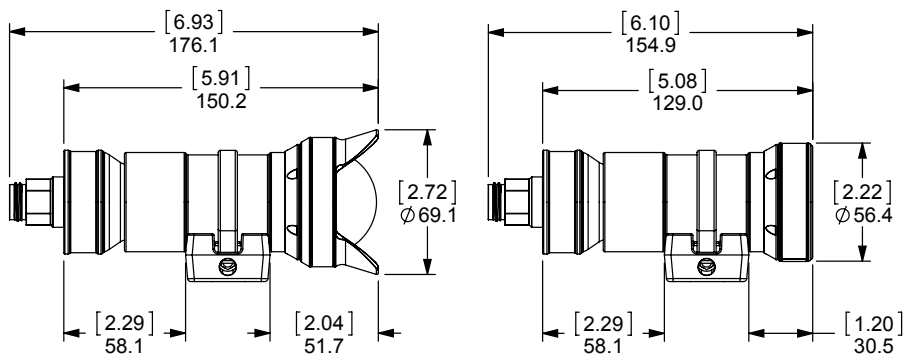
HD Multi SeaCam®

Dimensions

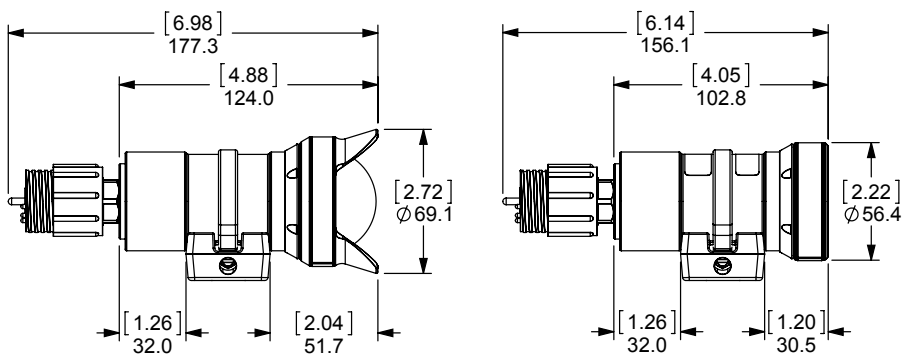
Flexlink™



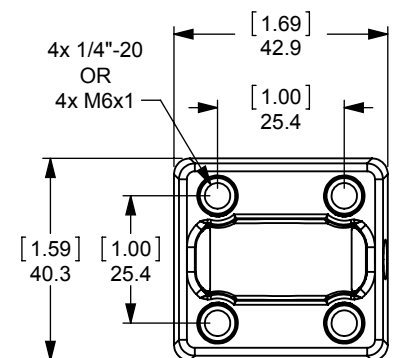
Fiber



Coax



Bracket



[inch]
mm

T: (858) 576-1261
F: (858) 576-0219
www.deepsea.com
sales@deepsea.com

*Specifications subject to change without notice.